

## Using Farmer Field Schools Approaches to Overcome Land Degradation in Agro-Pastoral Areas of Kenya

### Land degradation assessment – Baseline survey on spatial analysis of land cover / degradation trends and Toolkit Development.

Training module created by Thomas Gumbrecht, [www.mapjourney.com](http://www.mapjourney.com)

Last updated: October 2007

#### LESSON 0 – INSTALL DIVA-GIS

##### Lesson overview

In this lesson you will install and prepare DIVA-GIS, a freeware Geographical Information System (GIS), developed by [CIP](http://www.cip.cgiar.org) (International Potato Center, Peru).

##### Install DIVA GIS

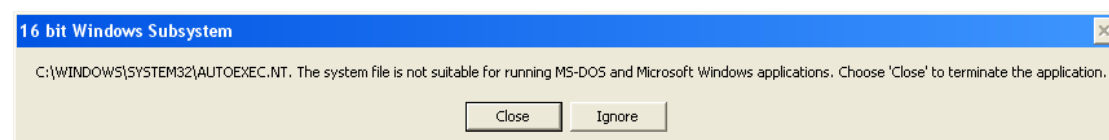
DIVA-GIS is a free software, produced by the International Potao Centre (CIP), a member of the Consultative Group for International Agricultural Research ([CGIAR](http://www.cgiar.org)) system. The [conditions of use and distribution](#) are given at the end of this lesson.

DIVA GIS is included on the project CD (version 5.2, with upgrade to 5.4). The program can also be downloaded from [www.diva-gis.org](http://www.diva-gis.org). CIP has also produced a more recent version of [DIVA](#) (at time of writing version 6.0.3), this version is however a bit more complex and will not be used in this training module.

DIVA GIS version 5.2 comes in two alternatives – dependent on your computers configuration you must either install the standard version, or the xp version. Try the standard version first (diva\_52.zip) and if that does not work then you can try the xp version (diva\_52xp.zip). Once you have installed the program you can upgrade to version 5.4 by copying the diva.exe file for version 5.4 to the program directory of DIVA-GIS.

##### Installation of DIVA-GIS 5.2

The standard version of DIVA-GIS 5.2 is in the directory \software\diva-gis\diva\_52 on the project CD. Double click the file called SETUP.EXE and follow the installation instructions. This training module assumes that the program is installed under the default directory C:\Program Files\DIVA-GIS. If you get an error message during the installation as shown below, click Close and try the xp version.



## Installation of DIVA-GIS 5.2xp


The xp version of DIVA-GIS 5.2 is in the directory \software\diva-gis\diva\_52xp on the project CD. Double click the file called setup.exe and follow the installation instructions. This training module assumes that the program is installed under the default directory C:\Program Files\DIVA-GIS.

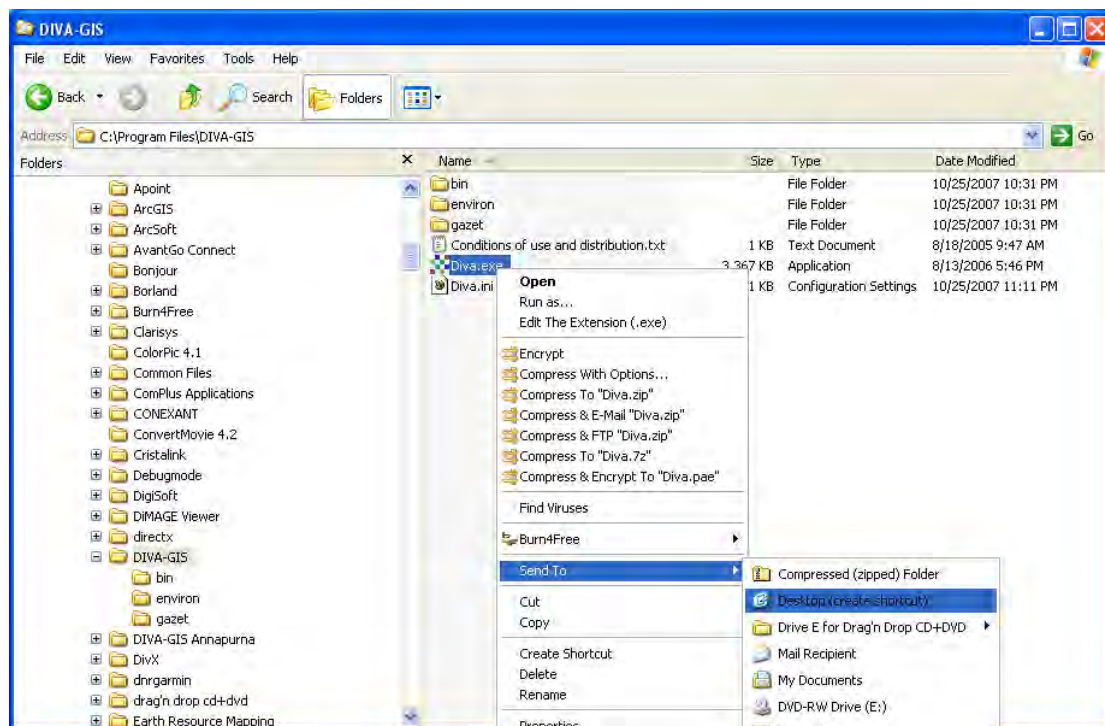
## Upgrade to DIVA-GIS 5.4

To upgrade to DIVA-GIS 5.4 copy the file diva.exe from the project CD folder \software\diva-gis\diva\_54 to the program folder of DIVA-GIS on your computer (default folder is C:\Program Files\DIVA-GIS). This will overwrite the installed 5.2 version, but that is OK.

## **Start DIVA-GIS**

Start DIVA-GIS by double clicking the DIVA-GIS icon on the desktop (if there is one – depends on your installation). If you do not have an icon on your desktop use Windows Explorer, navigate to the program folder for DIVA-GIS (C:\Program Files\DIVA-GIS), point the cursor to the file diva.exe, click on the right mouse button and select Desktop (create shortcut) as shown below. You should now have the

DIVA-GIS program icon,  on your desktop.

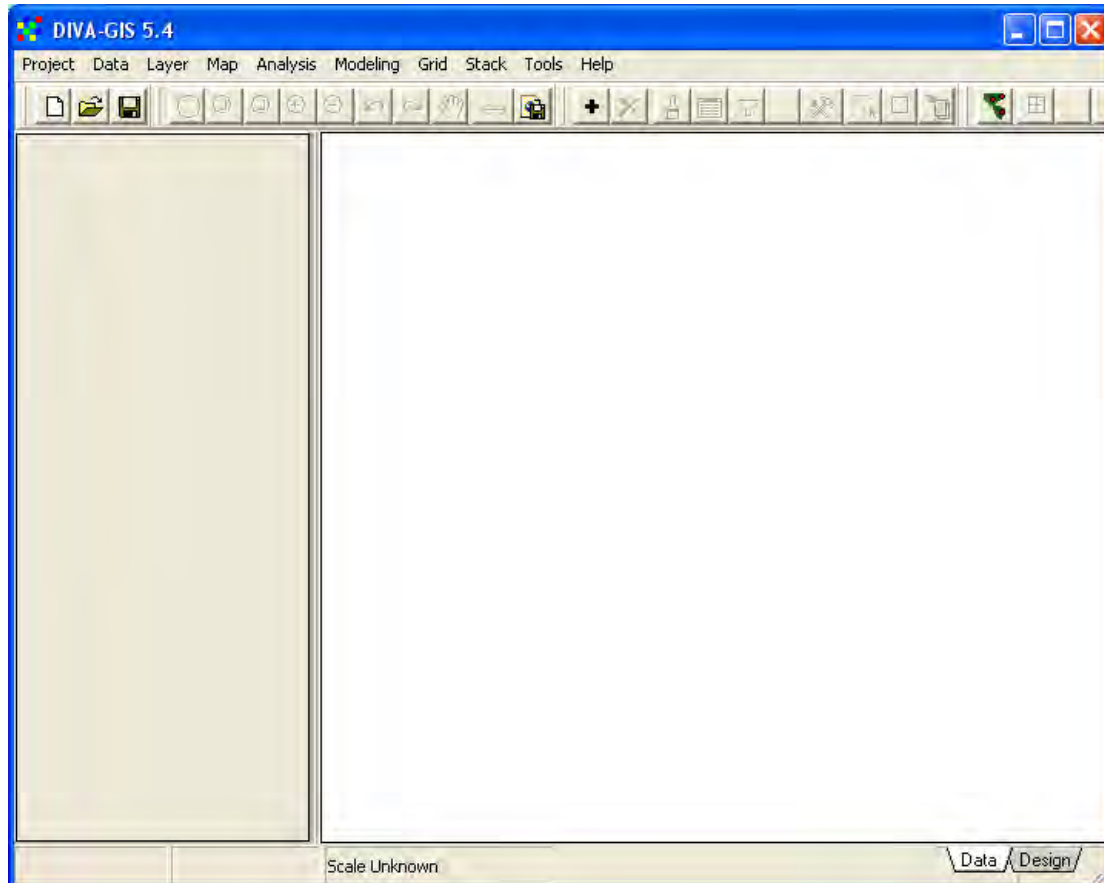


The first time you start DIVA-GIS the program interface should look like below, albeit the order and number of tool buttons may vary dependent on which version and installation you used.

## **DIVA interface**

DIVA will start with an empty project (you will soon learn about projects), and show an empty display. The interface of DIVA-GIS is very similar to many of the high-end commercial GIS packages. If you learn DIVA-GIS it will be very easy to learn

another GIS program. The top row is the menu with its drop down menus. Thereafter follows the tools, divided in toolbars, with most tools grayed out – you must put some data in the display before they become active. The main area is divided into the Data View, and to the left of it is the Legend. Below the map display you see some basic information (scale and later cursor position). The two tabs in the lower right you can use for toggling between the Data View and the Design View. Most of the work is done in the Data View, while the Design View is used for creating the final map layout before publication.



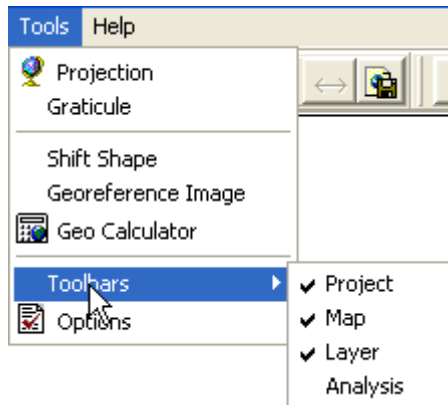
### **Copy the GIS data layers to your local harddrive**

The GIS data layers included on the project CD are all available under the folder `\data_spatial`. You can work with the layers on the CD, but it will be slower than if you copy them to your local hard drive. And, more importantly, in order to add or change the data, you must put it on a local drive (or on a network or usb-drive, but not on the CD – it is not writeable). The best is to copy the folder `\data_spatial` and all its sub-folders to the local drive called C. But you can put it on any local drive, network server or even on a portable disk or a USB-drive. In this training module the data was put on local drive called D.

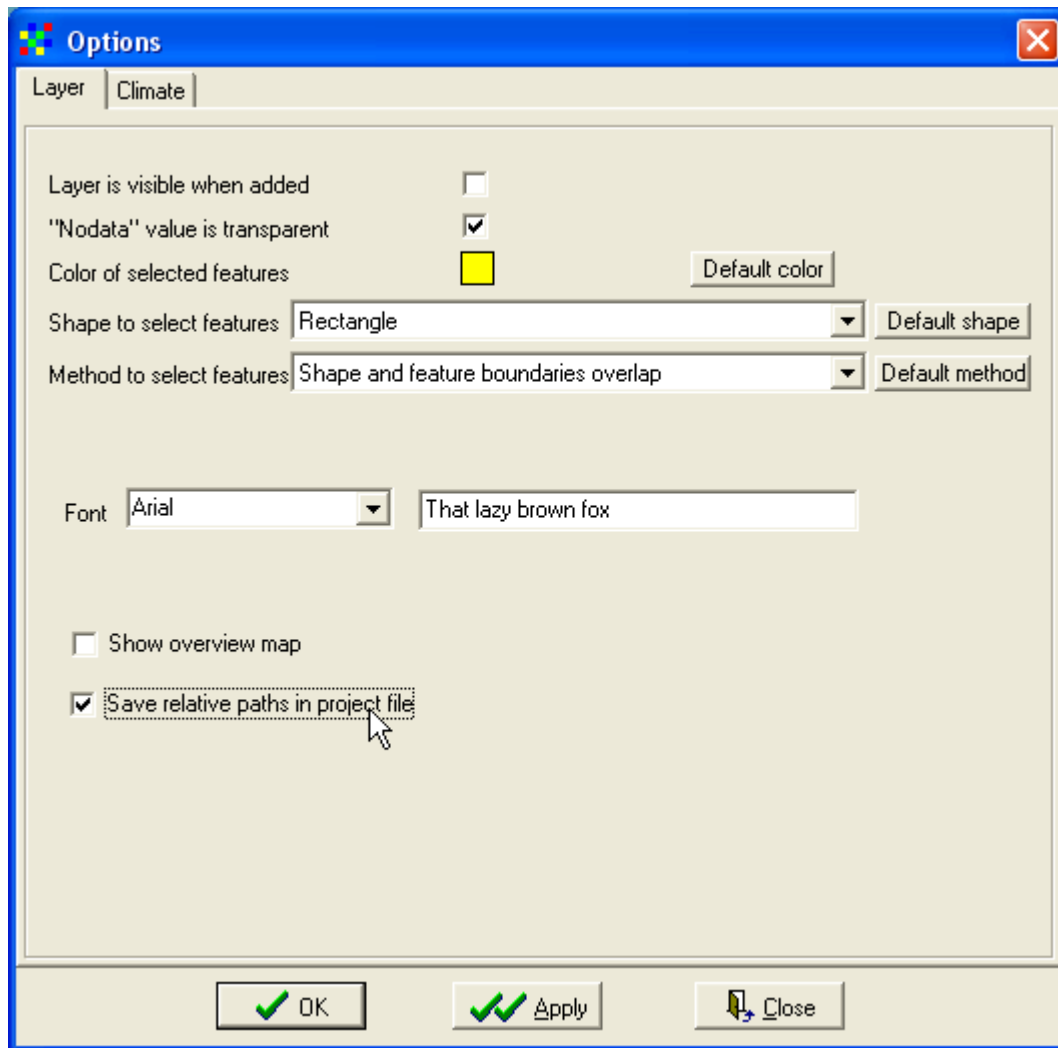
### **Set DIVA-GIS options**


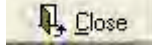

When you have decided where to keep your dataset, you should set some of the options for DIVA-GIS. First you can set which tools you want to include, go via the menu: Tools – Toolbars (shown in the figure below), and you get the option of removing some of the tools. Most of the tools are needed for this and the following lessons, but Analysis is not used, and hence removed in the example below. Even if

you remove a toolbar, the tools can still be accessed from the menus. Dependent on which Toolbars you include, the tools will have a different order in the Toolbar of the DIVA-GIS project window. Hence in the following lesson, you might see that tools do not sit at the same place on your version of DIVA-GIS compared to this document. This depends on if you removed a Toolbar, in which order you removed the Toolbars, and when you saved your project.




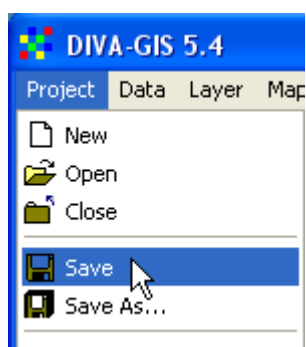
Then you should change the options of DIVA-GIS via the menu: Tools – Options. The Options window will popup. The first time you open the Options window you will get to the Climate tab. To use climate data with DIVA-GIS, please refer to the [DIVA-GIS manual](#) and the climate data that comes with DIVA-GIS. Both the manual and some low resolution default data are included on the project CD (see section [DIVA-GIS resources](#) towards the end of this lesson). For now just ignore the Climate tab, and click the Layer tab. Here you get various options that you will soon understand, what is important now is to choose the last option Save relative path in project file. If you select this option (the checkbox is checked) then you can copy your dataset from one drive or folder to another and the project will still work. This is often the preferred option. If, however, you choose to work with the data on a CD, then you should uncheck this option.



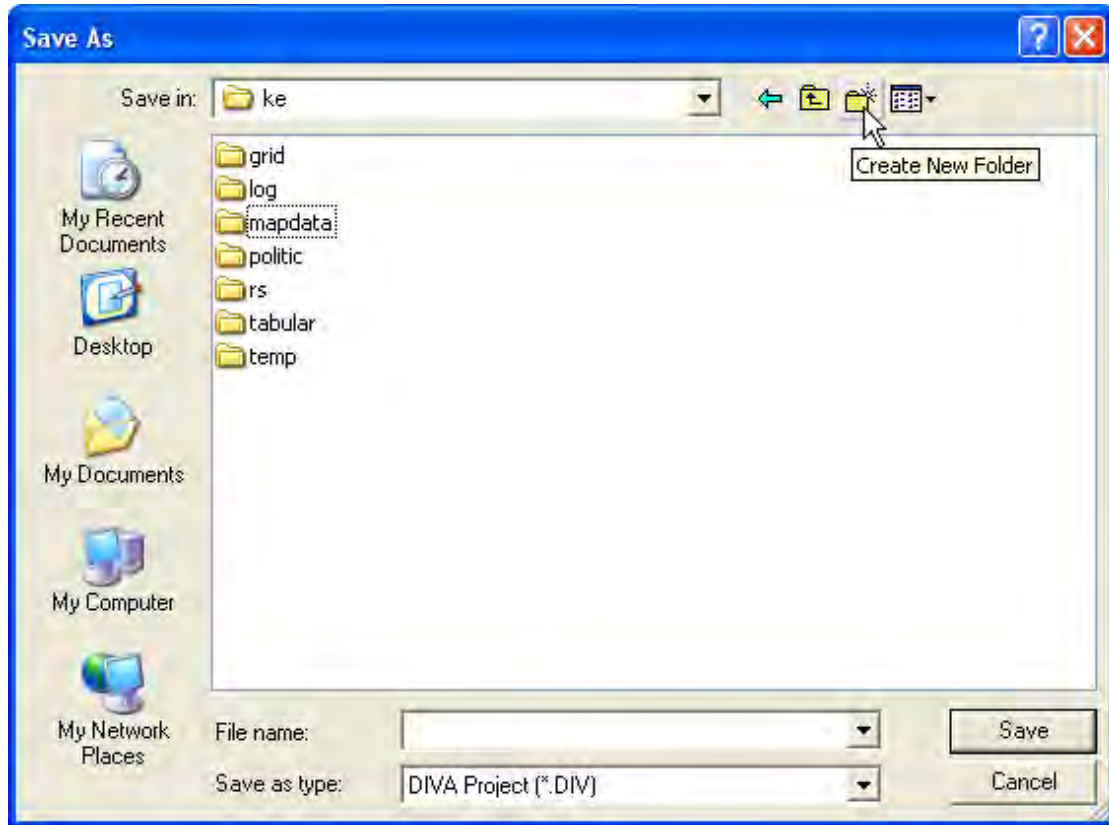
When you have set the default options, click the Apply button, , and then the Close button, . Or click the OK button,  to apply and close with one click.

### Save the project

Now that we have set the properties and prepared DIVA-GIS it is time to save the project (a project consist of the DIVA-GIS settings you did, added maps, and map compositions like symbolization and labeling). Save your project by clicking the Save Project tool, , or via the menu: Project – Save.



In the Save As window that pops up, it is suggested that you navigate to the folder data\_spatial/ke and create a new folder (as shown below) called my diva, and then save your project in this new folder. In the following lessons it will be assumed that your projects are called lesson1, lesson2 etc. As your project does not contain any data yet, you can call it e.g. lesson0, or template0.



When you save your project the name you gave it will appear at the top of the DIVA-GIS project window. When you are working with a project remember to save your project now and then while working, in case of power cuts, or the computer gets stuck etc. Some of the more advanced modules of DIVA-GIS are not completely stable, and then DIVA-GIS stops working, and you will loose unsaved work in the project.

### **DIVA-GIS resources**

The project CD contains the following DIVA resources from [www.diva-gis.org](http://www.diva-gis.org)

Resource	Folder\file
DIVA 5.2 installation	\software\diva-gis\diva_52\SETUP.EXE
DIVA 5.2xp installation	\software\diva-gis\diva_52xp\SETUP.EXE
<a href="#">Manual</a>	\software\diva-gis>manual\DIVA-GIS5_manual.pdf
<a href="#">Tutorial</a>	\software\diva-gis\tutorial\DIVA-5_Tutorial.pdf
Tutorial data	\software\diva-gis\tutorial\tutor_v5.zip
Current climate	\software\diva-gis\climate\diva_worldlim_10m.zip
Future climate	\software\diva-gis\climate\diva_wc_ccm3_10m.zip

The current and future climate data included on the project CD are in 10 minutes resolution; more high resolution data is available on the [DIVA climate data web-page](#). The climate can be used by installing it in a predefined climate directory in the DIVA program folder (see the [DIVA manual](#)).

#### **DIVA-GIS version 5 - Conditions of use and distribution**

Permission is hereby granted, free of charge, to any person obtaining a copy of this software and associated documentation files (the "Software"), to deal in the Software without restriction, including without limitation the rights to use, copy, modify, merge, publish, distribute, sublicense, and/or sell copies of the Software, and to permit persons to whom the Software is furnished to do so, subject to the following conditions:

THE SOFTWARE IS PROVIDED "AS IS", WITHOUT WARRANTY OF ANY KIND, EXPRESS OR IMPLIED, INCLUDING BUT NOT LIMITED TO THE WARRANTIES OF MERCHANTABILITY, FITNESS FOR A PARTICULAR PURPOSE AND NONINFRINGEMENT. IN NO EVENT SHALL THE AUTHORS OR COPYRIGHT HOLDERS BE LIABLE FOR ANY CLAIM, DAMAGES OR OTHER LIABILITY, WHETHER IN AN ACTION OF CONTRACT, TORT OR OTHERWISE, ARISING FROM, OUT OF OR IN CONNECTION WITH THE SOFTWARE OR THE USE OR OTHER DEALINGS IN THE SOFTWARE.